

CTH4 400 T4 0,75kW (278400106)

GENERAL DATA



ROOF FAN, VERTICAL DISCHARGE

MANUFACTURING FEATURES

- Fan made of steel with polyester powder finishing coat.
 - High efficiency backward impeller with self-cleaning system of steel.
 - Standard asynchronous motor with IP-55 protection and Class F insulation.
- Manufactured with standard voltages: 400V 50Hz three phase motors

APPLICATIONS

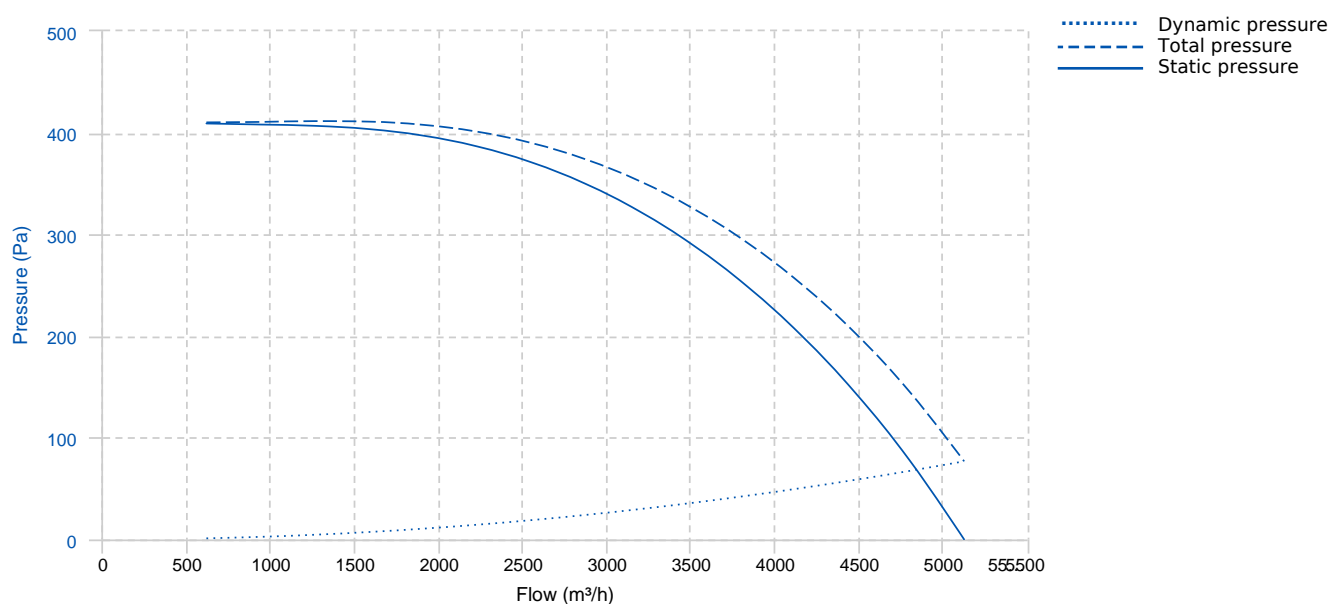
Specially designed for roof installation, with vertical discharge without any additional kit, they are suitable for:

- Smoke extraction
- Air renewal in buildings and industries.
- Industrial and professional kitchen hoods.
- Maximum continuous operation temperature: 80°C (fluide).
- Maximum ambient temperature: 50°C.
- Cinemas.

UNDER REQUEST

- Version made of inox 304/316.
- Finishing C4-C5.
- Special voltages.

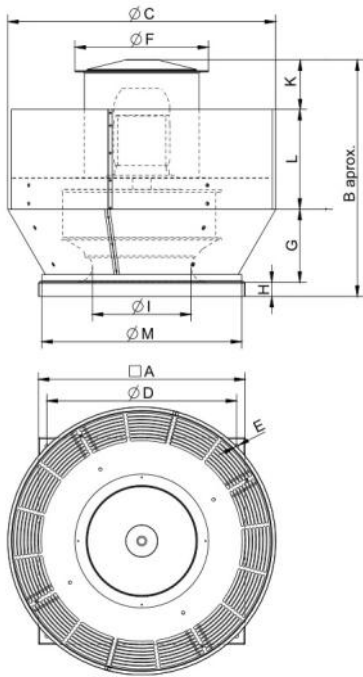
PERFORMANCE CURVE



TECHNICAL DATA

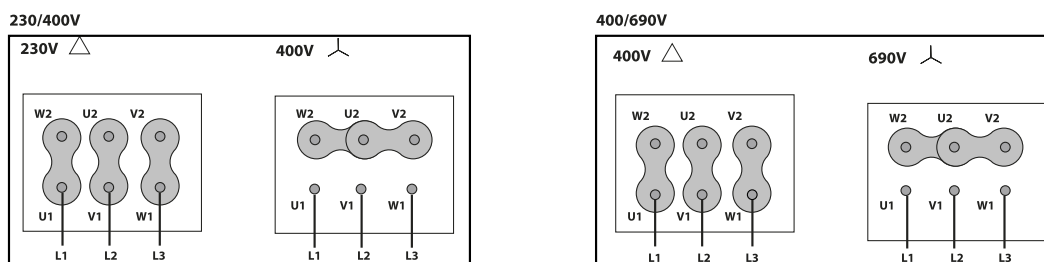
Fan							
RPM	1410	Approx. weight	22 kg	Max. Flow	5130 m³/h		
Motor							
Power	0,75 kW	RPM	1410	I max. (230V)	2,83 A	I max. (400V)	1,63 A
Size	80	Approx. weight	15 kg	Efficiency (%)	82.5 %	FP	0.81

DIMENSIONS



Dimensions (mm)									
A	550	B	637.5	D	490	G	193	H	40
K	138	L	267	ØC	701.6	ØE	12	ØF	374
ØI	266	ØM	528						

WIRING DIAGRAM



ACCESSORIES



SAFETY SWITCH
INT 25 3P A
REF: INT253PA

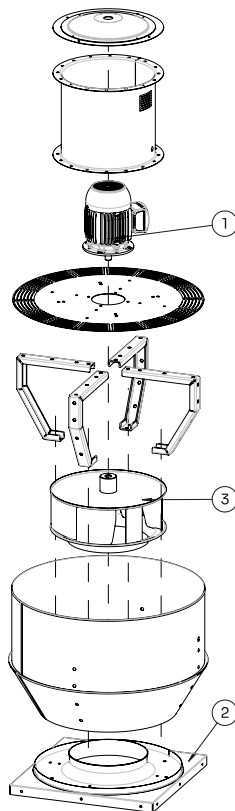


FREQUENCY SPEED CONTROLLER
SFC 230 I 4,2A *
REF: SFC230I004



FREQUENCY SPEED CONTROLLER
SFC 400 III 2,2A *
REF: SFC400III2

SPARE PARTS





	Code	Model	Qty
1	721001145	MOTOR 0,75kW T4 B5 230/400V	x1
3	R-279409381	IMPELLER THRE R63B1 400X140x19 RD	x1